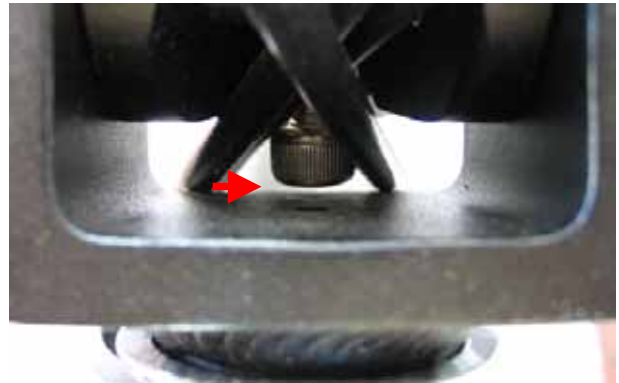


Safety Bolt

Your Cruzbike Sofrider or Freerider is fitted with a unique safety feature to prevent the Telescoping Front Tube (TFT) from disengaging. If this were to occur, the pedals could swing down and touch the road dangerously.

⚠ Warning: Pay attention to the following instructions on checking and setting the Safety Bolt. Failure to do so could result in accident and serious injury or death.

25. In the following two pairs of pictures, note the location of the safety bolt and the clearance to the U bracket.



When the TFT is fully extended, (top) it comes to rest against the bolt head (above) and so the TFT cannot disengage.

When the TFT is fully closed, (top) there is a small gap between the bolt head (above).

26. Check that you cannot disengage the TFT. If you can, then the bolt needs to be turned anticlockwise. Turn it anticlockwise half a turn at a time, remembering to retighten the lock nut at its base, reassemble and recheck. To gain access to the Safety Bolt, remove the pivot pin using two 6mm allen keys and disconnect the top of the TFT.