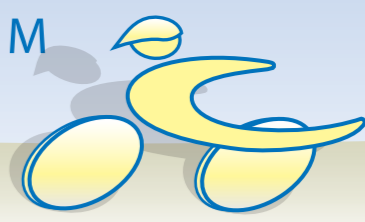


FRONT WHEEL DRIVE

Health ✓  
Fitness ✓

Safety ✓  
Fun ✓

# CRUZBIKE™



*it just makes sense!*

🎵 be happy

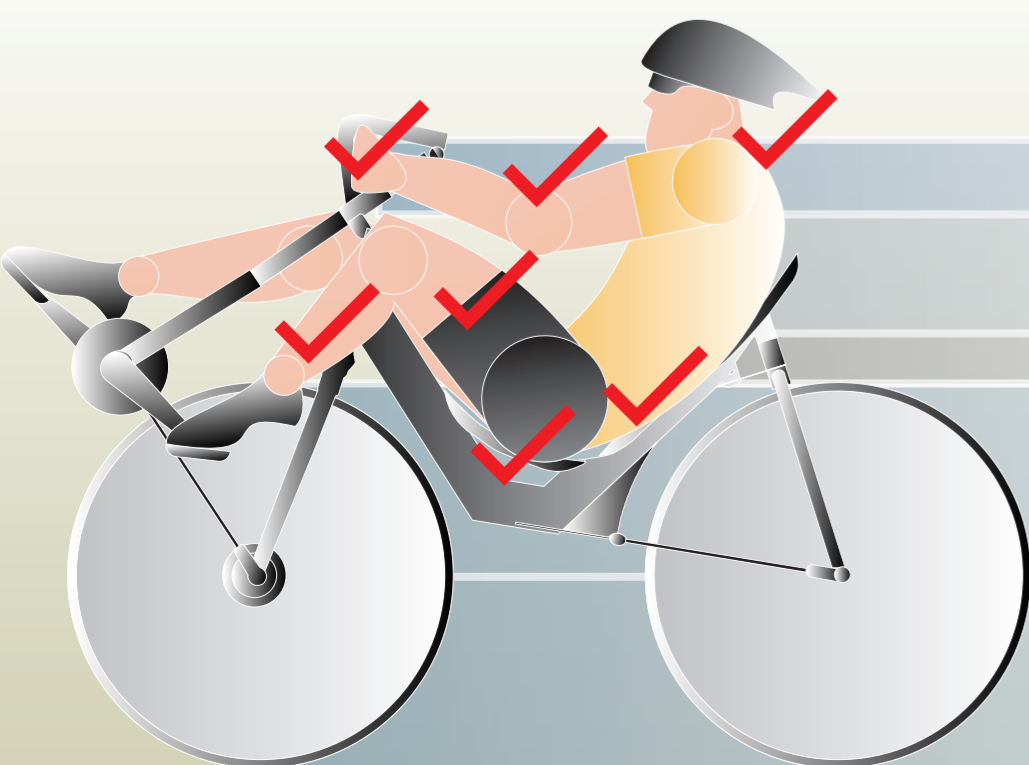
# SILVIO

The pain of burning legs, bursting lungs and the hard swallow of dry air down the throat? Yes! The thrill of leading out again? Oh, absolutely! But living with a sore or numb crotch? Umm, no thanks. Risking erectile dysfunction or genital numbness? You gotta be kidding - a man's gotta .. you get the idea. Living with lower back complications, wrist pain and L4 L5 spinal issues? Forget it, that's just plain unnecessary. Leave all that to the 20 somethings with UCI dreams who don't know better. So don't be a cretin, let Cruzbike Silvio secure your riding future as long as you decide. Get out there and really truly enjoy the thrill and the thrill of how good you feel at the end.

**world's fastest unfaired road bike**



Silvio runs adjustable air suspension up front with elastomer supported titanium leaf at the back each with carbon fiber chainstays for maximum rollout and positive tire contact with the road. The frame is T6 7005, designed in Australia and built by a Cruzbike Inc. in Taiwan to exacting specifications.



CRUZBIKE's patented frame solution straightens out the ergonomic issues to let your body work as it was meant to.

If you are cycling for fitness and thrills, why be tortured by a competition bike? Huh?

